



Manufacturer's brochure

English



HAPPY breath

Happ Kunststoffspritzgusswerk und Formenbau GmbH

Brölstraße 2b · D-53809 Ruppichteroth

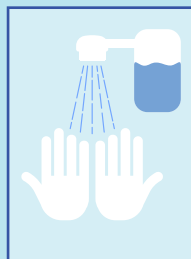
Phone: +49 (0) 22 95 – 91 82 80 · Fax: +49 (0) 22 95 – 91 82 82

Information on products, product combinations and replacement filters:
www.happy-breath.de · E-Mail: info@happy-breath.de

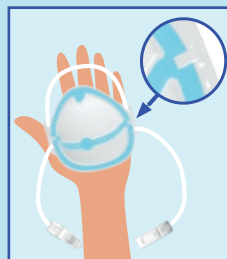
MADE IN GERMANY

Put on the respirator mask

1. Disinfect hands.



2. Place the filter element in the carrier system, push the recess under the hooks.



3a. Take the closure ends of the headband in one hand.



3b. Place them on top of each other behind the head.



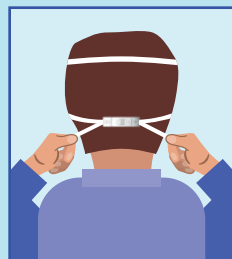
3c. Pull outward to engage.



4. Put the carrier system on chin and nose, pull the upper headband onto the back of the head.



5. Adjust the headband on the clasp to the correct length.

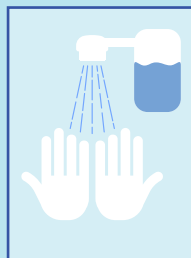


6. Bring the nose clip into the optimal position and press lightly.



Take off the respirator mask

1. Disinfect hands and invest gloves.



2. Place the upper headband from back of the head over the head in front of the carrier system.



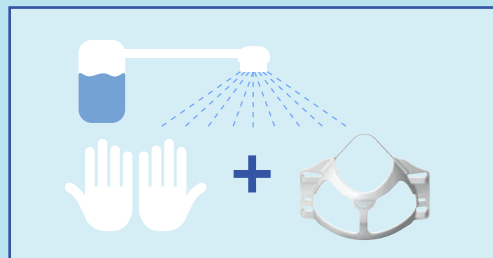
3. Open the clasp in the neck by pushing it together.



4. Remove and dispose the filter element.



5. Disinfect hands and Happy breath-carrier system.



Manual disinfection of the reusable carrier system in the immersion bath

- Disinfection with 1% disinfectant solution „1+1 Wofasteril SC super“.
- Immerse the carrier system for 30 minutes at a maximum temperature of 30°C.
- Then dry at a maximum temperature of 60°C.
- After the disinfection and drying process, the carrier system must be subjected to a visual and functional test.

Source of supply disinfectants:

Item designation: 1+1 Wofasteril SC super

KESLA HYGIENE AG

Keslastraße 2 · D-06803 Bitterfeld-Wolfen

Phone: +49 (0) 3494 6995 0

Fax: +49 (0) 3494 6995 29

eMail: hygiene@kesla.de

web: www.kesla.de

Application video:
<https://happy-breath.de/service/videos>



Application:

Protects against solid and liquid aerosols according to EN 149: 2001 + A1: 2009 (D), carrier system can be reused 30 times, filter for single use, change per shift. If you have any questions, please contact the safety officer or Happy breath. Observe national regulations and laws for the use of personal protective equipment.

Safety instructions:

You will not be protected if you do not wear the respirator correctly.

Follow the manufacturer's instructions.

- Check the complete respirator mask for defects or damage before use.
- Make sure that the filter element and the carrier system are correctly connected to each other.
- When putting on the respirator mask, make sure that the inside is not contaminated.
- The inside and outside of the used mask can potentially contain pathogens and when putting it on again, contamination of the wearer, especially in the face (nose, mouth, eyes) or hands, must be avoided.

- The respirator mask cannot be used on beards, facial hair, or other factors that prevent a good seal between the face and the edge of the respirator mask.
- The respirator mask must be properly placed over the mouth, nose and cheeks and fit snugly around the edges. In particular, the nasal clip must be adjusted to ensure a tight fit in the nasal area. The nasal clip can be deformed by pressing it – to the right and left of the nose.
- Every time you put it on, check for leaks by holding the respirator mask with both hands and breathing out forcefully. During this process, no strong leakage of air should be detectable in the nasal area.
- Never make changes to the respirator mask.
- Use the filter elements only once!
- The filter element must always be changed after the end of a work shift.
- The carrier system can be reused 30 times!
- The carrier system must be cleaned/disinfected before inserting a new filter! See left side.

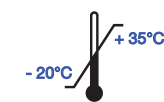
Warning notices:

- The filter elements do not protect against gases and vapors.
- The oxygen content in the breathing air must be at least 19.5% by volume.
- The respirator mask must not be used if the concentration, type and properties of the pollutants are not known.
- Do not use in an explosive atmosphere.

Remove respirator mask if...

- a significant increase in breathing resistance occurs.
- the respirator mask collapses due to excess moisture.
- the breakthrough (smell/taste) is perceived.
- the respirator mask is visibly soiled or damaged.
- the respirator mask no longer seals against the face of the user.

Meaning of the pictograms:



Temperature range of storage condition



End of storage time see packing and seal



Maximum relative humidity of storage condition



See information brochure of the manufacturer

